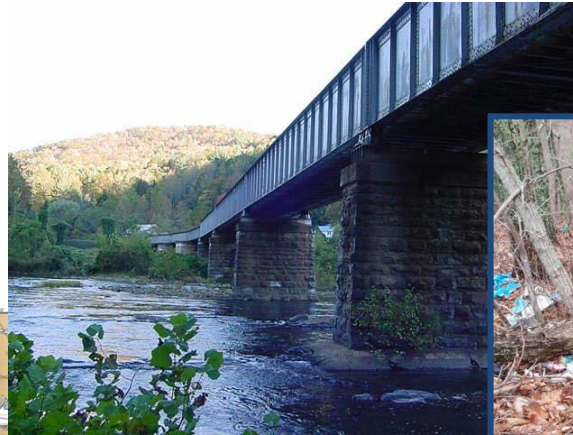


# Environmental Issues and Your County

*Local governments providing for public health and safety through protection of Air, Land, and Water*

# Counties Contend with Host of Environmental Topics



**Solid Waste/Land Use/Air  
Quality/Water  
Quality/Planning/Economic  
Development/Tourism**

# Solid Waste Management Act of 1991

---

- **County Responsibilities:**
  - **Proper management of solid waste collection, transfer, transport, processing, and disposal**
    - **Includes recycling, diversion, waste tire management and problem waste collection.**
- **Solid Waste Region Responsibilities**
  - **Must have Solid Waste Plan**
  - **Must meet 25% Waste Reduction Goal**
  - **Must provide for Community Education**

# Components and Services

- **Planning**
- **Waste Reduction**
- **Financing**
- **State Grants**
- **Waste Tires**
- **Recycling**
- **Collection and Transportation**
- **Household Hazardous Waste**
- **Used Oil**
- **Education, Information and Reporting**

# Collection, Transportation and Disposal

**Each county must assure that a collection system is available to all residents.**

- **Type collection system**
- **How transported**
- **Where disposed**
- **How financed**



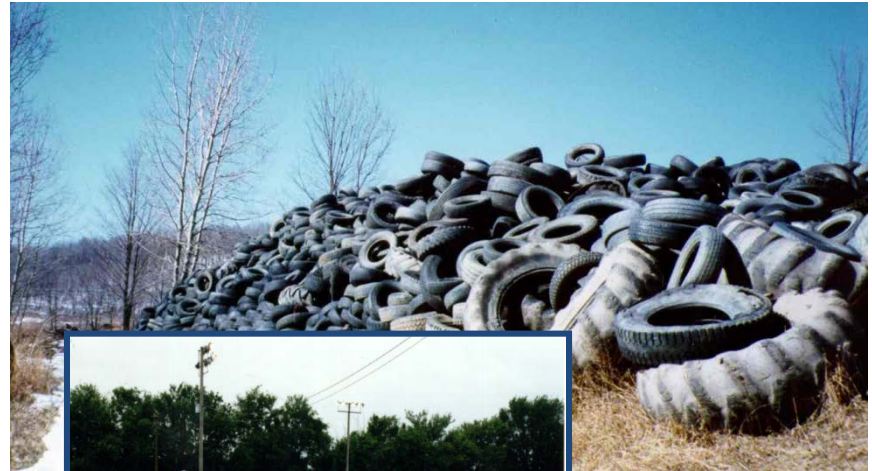
# Waste Reduction/Recycling

- **Counties must divert 25% of Waste (T.C.A. 68-211-821)**
- **How waste reduction is measured (T.C.A. 68-211-835)**



# Restrictive Wastes

- **Whole tires can not be disposed of in Tennessee landfills**
- **Other problem wastes include oil, batteries, and recently “E-wastes”.**
- **Household Hazardous Waste collection events are funded by TDEC and can serve as participatory community events.**



# Financing Solid Waste



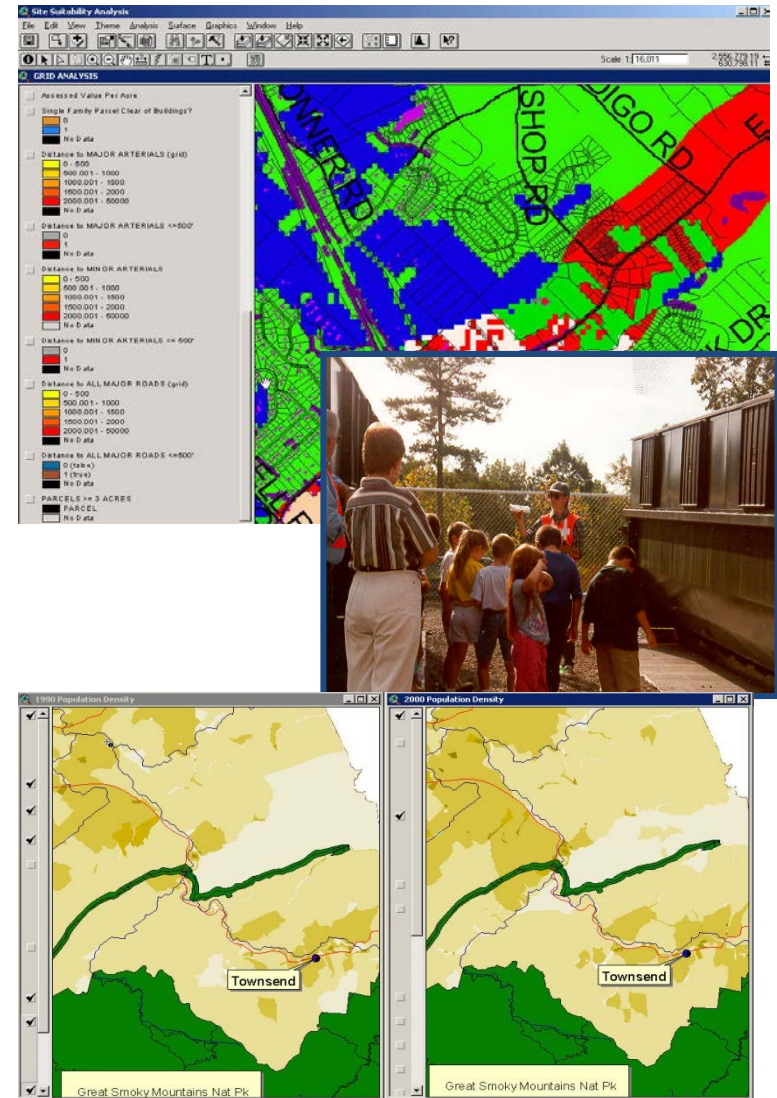
- **Solid Waste Management Fund (T.C.A. 68-211-821)**
- **Local Funding Options (T.C.A. 68-211-835)**
- **Used Oil Collection Fund (T.C.A. 68-211-1005)**
- **Recycling Rebate (11 counties)**
- **Recycling Equipment**
- **Material Recovery Facility**
- **Used Oil**
- **Waste Tire Funding**
- **Development Districts**
- **Household Hazardous Waste**
- **Planning Grants**



# How CTAS can help..

## Technical Assistance Areas

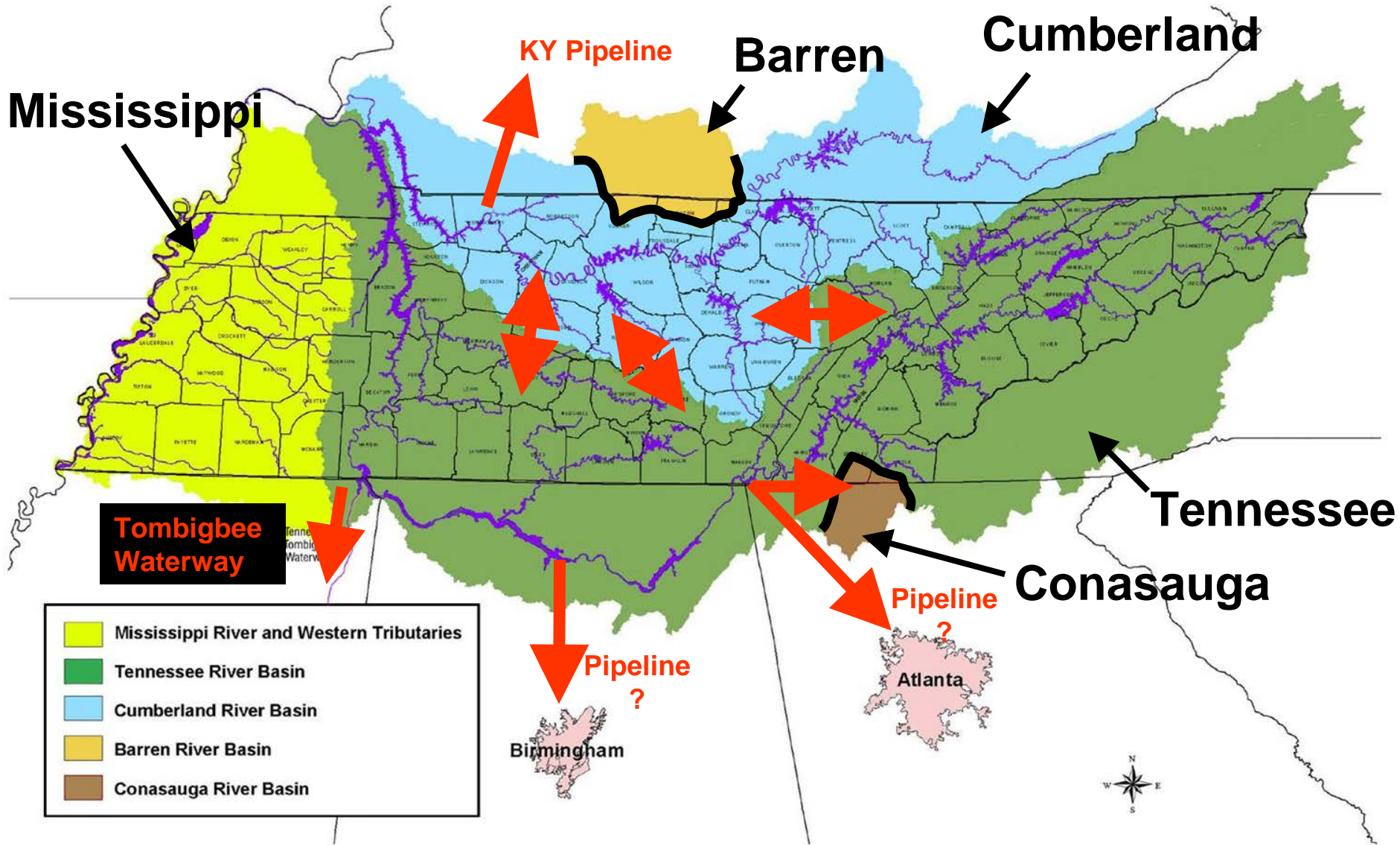
- **Facility Siting and Regulatory Issues**
- **Waste Reduction**
- **Bids and Equipment Specification**
- **Cost Effectiveness**



# Water Issues

- Water Quantity
- Water Quality
- Source Water Protection

# FIVE MAJOR RIVER BASINS OF TENNESSEE AND POSSIBLE INTER-BASIN TRANSFERS





A photograph of a rocky stream with a corrugated metal pipe on the bank. The stream is filled with dark water and surrounded by large, grey rocks. A large, corrugated metal pipe is visible on the right bank, partially buried in the rocks. The background shows a grassy hillside and trees under a clear sky.

# Point Source Pollutants

... are identifiable sources of pollution such as a pipe or ditch from a municipal or industrial wastewater treatment facility.

# Nonpoint Sources of Pollution

. . . created when rain, snow or irrigation runoff flows over or through the ground and picks up pollutants



# Storm Water Discharges, Phase I

- Phase I of this federal program was implemented in 1990.
- Phase I used a permit system to regulate storm water discharges from larger cities and construction projects.

# Storm Water, Phase II?

- Expanded Phase I by requiring counties, cities, and additional other parties to implement programs and practices to control stormwater runoff.
- If you are named, you need a Permit and plan



# Counties often need to address Surface Runoff Problems

- New Development can increase likelihood of flooding
- Bare soils and “impervious surfaces” contribute to runoff
- Can lead to “impaired stream” designation and permit violations



# Applies to everyone in Tennessee

- Must notify the Division of Water Pollution Control to receive a permit for grubbing, clearing, grading or excavation of 1 or more acres of land
- Could be in the form of a StormWater Pollution Prevention Plan (SWPPP)

# Phase II Funding/Financing

- Debt Financing-for capital-intensive projects
- Federal, State, or Regional Grants and Loans (ex. State Revolving Loan Fund—SRF)
- Stormwater Utilities
- General Fund
- Plan Review and Inspection Fees
- Fee-in-Lieu of On-Site Construction

# Air Quality Issues

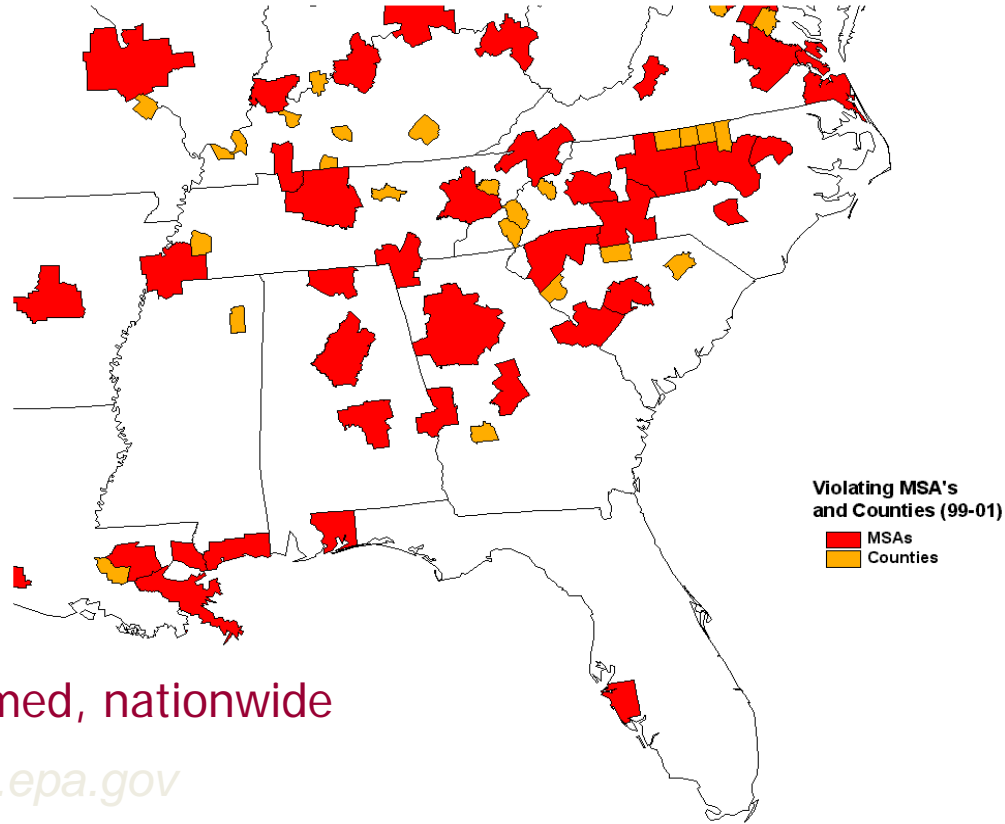
- EPA recently revised the standard for two ‘criteria pollutants’, **OZONE** and **PARTICULATE MATTER**.
- These revisions impact Tennessee government, business and residents.

# Southeastern areas exceeding the 8-hour ozone standard

About 65% of Tennesseans live in non-attainment counties

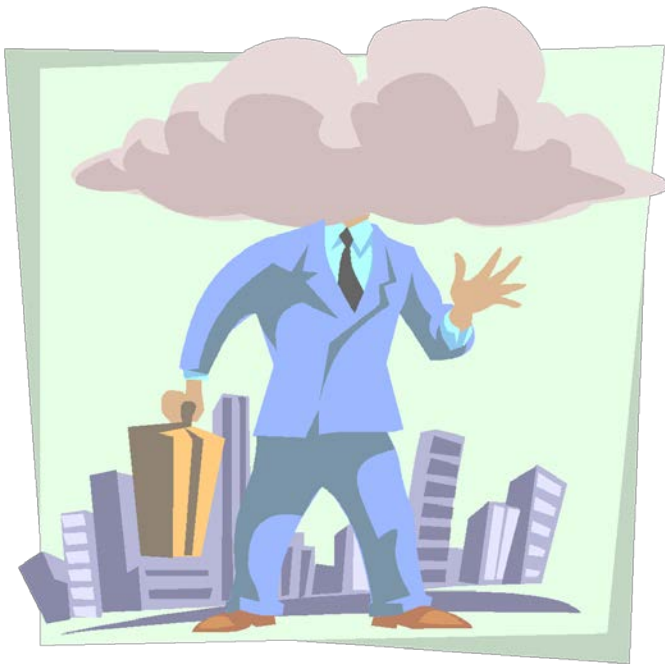
494 counties named, nationwide

*Source: [www.epa.gov](http://www.epa.gov)*



# What does “non-attainment” mean?

- **The ‘Measured levels’ for these criteria pollutants have exceeded the health-based standard**



**Or...The air is not  
always healthy  
to breathe**

# How can non-attainment affect my county?

- **Possible Impact on economic development**
- **Tougher permitting for industry**
- **Industrial recruitment difficult**
- **Highway funds subject to transportation conformity rules**

# Final Comments..

- Recognize and promote your existing county programs
- Take proactive stance on regulatory issues
- Strive for most efficient and affordable ‘service delivery’ that assures public health and safety
- Call CTAS